



520 square feet

Kitchen with microwave, refrigerator, wood cabinetry, and solid surface countertops

Living room

One full bedroom

Walk-in closet

Walk-in shower

Washer/Dryer in unit

Individually controlled thermostat

Performance Park or field views

Large windows

10 foot ceilings

Chef-prepared meals - what you want when you want

Household model living with den, dining, kitchen and patio

Community:

Access to The Aurora

Health & Wellness Center

Access to Performance Park

NORTERRE

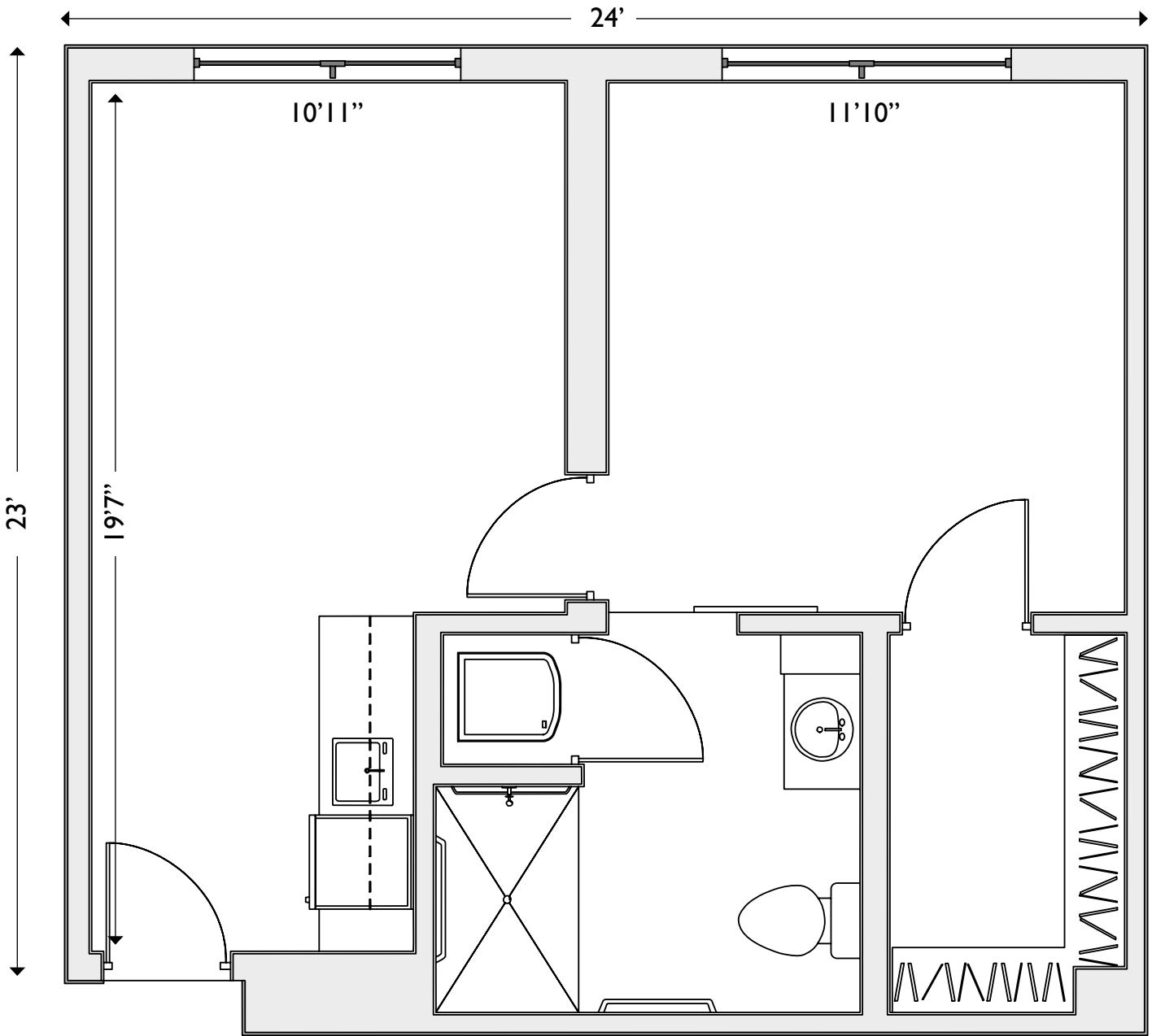
2609 Glenn Hendren Drive, Suite G100

Liberty, MO 64068

816.479.4793 norterre.org

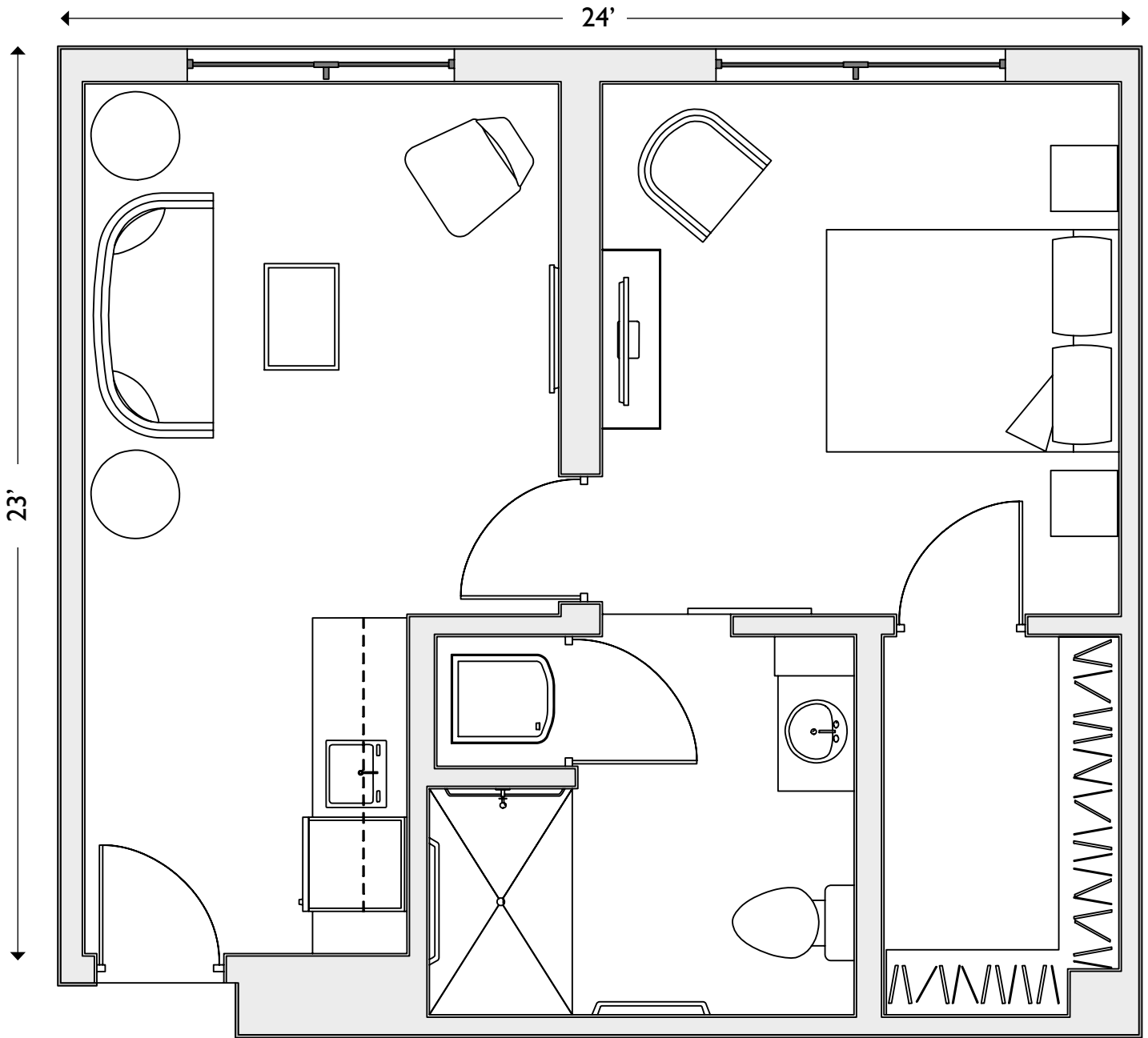
© Norterre Rendering services provided by Mayabious, courtesy of Action Pact Design
Floor plan images are intended for illustrative purposes; square footage is estimated and dimensions may vary between individual apartments. Square footage, amenities, services, and pricing subject to change.





© Norterre Rendering services provided by Mayabious, courtesy of Action Pact Design
Floor plan images are intended for illustrative purposes; square footage is estimated and dimensions may vary between individual apartments. Square footage, amenities, services, and pricing subject to change.





© Norterre Rendering services provided by Mayabious, courtesy of Action Pact Design
 Floor plan images are intended for illustrative purposes; square footage is estimated and dimensions may vary between individual apartments. Square footage, amenities, services, and pricing subject to change.

